

Fishery Biologist Undergraduate Internship Program

Who May Apply: Undergraduate students in their fourth year of study at an accredited University or College who are majoring in fisheries, marine biology, environmental studies, or other marine-related science.

Salary: GS-5-1 \$2,877/month (\$U.S.)

Employment term: May - August (approximately 14 weeks duration - start time negotiable)

Overview: The International Pacific Halibut Commission (IPHC) is seeking an enthusiastic and motivated student to work in the IPHC office located at the University of Washington in Seattle. The Internship Program is designed to give students exposure to a wide variety of tasks associated with the management of an international fisheries resource. Each student is assigned a specific project (chosen by the staff) which he/she executes. The student will work closely with a supervisor to ensure continuing progress toward work goals and with other staff members on the various tasks assigned.

Work term may include but is not limited to:

- Planning, executing, and completing a special project chosen by the staff.
- Reporting special project results as a paper and presentation to staff at the conclusion of the internship.
- Field work on an IPHC research vessel and/or dockside port sampling in British Columbia, Alaska, or U.S. West Coast.
- Work in the aging lab learning aging techniques, lab protocols, and uses of the final halibut ages.
- Assisting staff with other tasks as they arise.

Basic qualifications

- 1) Student must be in (or beginning) fourth year of undergraduate study at an accredited University or College and working towards a degree in aquatic related science.
- 2) Student will be working with a number of biologists and support personnel throughout the work term, and must possess good communication skills and enthusiasm to perform tasks as assigned. Student must be self-motivated and work well with limited supervision.
- 3) Although previous experience collecting data in the field is not a requirement, student must be motivated and willing to spend the required time on a Commission chartered survey vessel in the open ocean and/or in ports, and perform the normal duties of an IPHC sampler.
- 4) Previous education and/or experience in fisheries species identification, sampling protocols, and basic statistics are helpful, but not required.
- 5) A survival at sea course (scheduled and paid for by the IPHC) must be completed prior to deployment on a research vessel. Basic swimming skills will be needed to successfully complete the course.
- 6) Must be proficient with MSWord, Excel, and Powerpoint software.
- 7) Must have a valid passport at time of employment.

For more information, contact:

Christie VanLaningham, Experiential Learning Coordinator
cavanlaningham@sfos.uaf.edu - or - internships@sfos.uaf.edu
(907) 474-5801

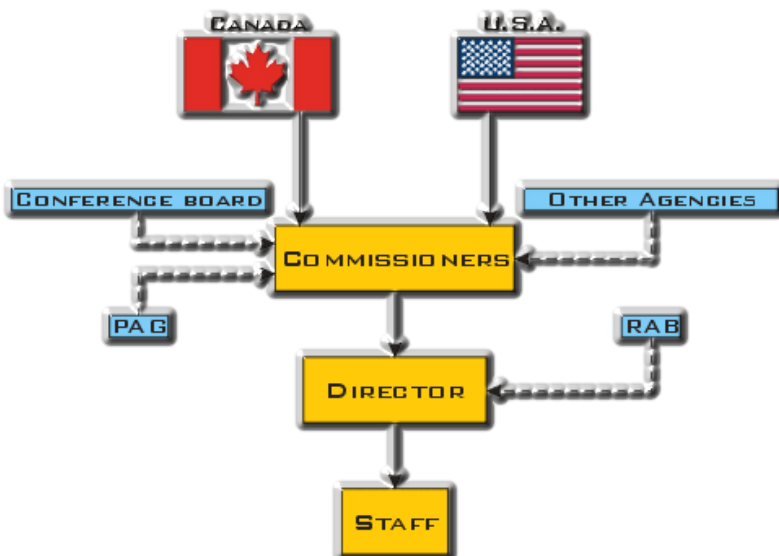
International Pacific Halibut Commission



The International Pacific Halibut Commission, or IPHC, an International Fisheries Organization, receives monies from both the U.S. and Canadian governments to support a Director and staff. Annually, the IPHC meets to conduct the business of the Commission. At this annual meeting the budgets, research plans, biomass estimates, catch recommendations, as well as regulatory proposals are discussed and approved then forwarded to the respective governments for implementation. The IPHC staff and offices are currently located on the University of Washington campus.

The IPHC conducts numerous projects annually to support both major mandates – stock assessment and basic halibut biology. Current projects include standardized stock assessment fishing surveys from northern California to the end of the Aleutian Islands, as well as field sampling in major fishing ports to collect scientific information from the halibut fleet. In conjunction with these ongoing programs, the IPHC conducts numerous biological and scientific experiments to further the understanding and information about Pacific halibut.

The Conference Board is a panel representing Canadian and American commercial and sport halibut fishers. Created in 1931 by the Commission, the Board gives the IPHC the fishers' perspective on Commission proposals presented at Annual Meetings. Members are designated by union and vessel owner organizations from both nations.



Agency Mission Statement

The International Pacific Halibut Commission (IPHC), originally called the International Fisheries Commission, was established in 1923 by a Convention between the governments of Canada and the United States of America. Its mandate is research on and management of the stocks of Pacific halibut (*Hippoglossus stenolepis*) within the Convention waters of both nations. The IPHC consists of three government-appointed commissioners for each country who serve their terms at the pleasure of the President of the United States and the Canadian government respectively.

The range of Pacific halibut that the IPHC manages covers the continental shelf from northern California to the Aleutian Islands and throughout the Bering Sea.

International Pacific Halibut Commission

P.O. Box 95009

Seattle, WA 98145-2009

Phone: (206) 634-1838

www.iphc.washington.edu