

EXHAUST FAN LIST						
FAN #	SERVICE	LOCATION	FAN			NOTES
			EXHAUST (CFM)	SP (IN WG)	MOTOR (HP)	
E5	AFT WINCH RM	IN SPACE (2-78-0)	2000	1.2	1	2 SPEED

**GENERAL NOTES**

- THIS DRAWING SHOWS SYSTEM CHANGES NECESSARY TO SUPPORT THE 12 FOOT LENGTHENING OF THIS VESSEL. THIS DRAWING IS A SUPPLEMENT TO THE REFERENCE 1 SYSTEM DRAWING. SEE REFERENCE 1 FOR MATERIALS SCHEDULE, EQUIPMENT LISTS, GENERAL NOTES, AND DRAWING REFERENCES.
- SEVERAL OF THE SPACE LOCATIONS WERE PREVIOUSLY DESIGNATED BY DIFFERENT FRAME NUMBERS ON THE UN-LENGTHENED VESSEL. THE FOLLOWING SPACES SHOWN IN THE DRAWINGS WERE RE-NAMED TO REFLECT THE VESSEL LENGTHENING.
 

DESCRIPTION	NEW	PREVIOUS DESIGNATION(S)
BOSN'S WORKSHOP/STORES	2-87-2	2-79-2 & 2-67-2
AFT WINCH ROOM	2-78-0	2-79-0
- TO ACCOMMODATE THE NEW ANTI-ROLL TANK'S EQUIPMENT, A SMALL ROLL TANK EQUIPMENT ROOM (3-67-0) HAS BEEN ADDED AFT OF THE MAIN MACHINERY ROOM. THE VENTILATION REQUIREMENTS WERE CALCULATED FOR THIS NEW SPACE, AND THE SUPPLY FAN (REF 3) HAS BEEN UPSIZED. THE SPACE IS NATURALLY EXHAUSTED.
- TO ACCOMMODATE THE LENGTHENED VESSEL DESIGN ADDITIONAL VENTILATION SHALL BE REQUIRED IN THE FOLLOWING SPACES:
 

BOSN'S WORKSHOP/STORES	2-87-2
AFT WINCH ROOM	2-78-0
SCIENCE HOLD	2-67-0
FWD WINCH ROOM	2-55-1

THE EXHAUST FAN SELECTED FOR THE AFT WINCH ROOM (#E5) HAS BEEN INCREASED IN SIZE TO PROVIDE AN ADEQUATE EXHAUST FLOW RATE TO BALANCE THE NEWLY INCREASED VENTILATION SUPPLY RATES. SEE EXHAUST FAN TABLE FOR DETAILS.

ALL CHANGES FROM THE UNLENGTHENED VERSION (REF 1) ARE SHOWN IN BOLD LINE WEIGHT

**REFERENCES**

- GLOSTEN DWG. NO. 07096-511-02, REV A, HVAC EXHAUST/RETURN DIAGRAM
- GLOSTEN DWG. NO. 07096-070-01A, REV-, GENERAL ARRANGEMENT & SECTION VIEWS - CHANGES TO SUPPORT LENGTHENING OPTION
- GLOSTEN DWG. NO. 07096-511-01A, REV -, HVAC SUPPLY DIAGRAM - CHANGES TO SUPPORT LENGTHENING OPTION
- ALASKA REGION RESEARCH VESSEL (ARRV) CHANGES TO THE CONTRACT SPECIFICATIONS FOR OPTIONAL LENGTHENING

**REVISIONS**


ZONE	REV	DESCRIPTION	DATE	APPROVED

**REVISIONS**

SYMBOL	DESCRIPTION
○→	DUCT UP
○←	DUCT DOWN
○↔	DUCT UP & DOWN
⊙→	A-CLASS DUCT UP
⊙←	A-CLASS DUCT DOWN
⊙↔	A-CLASS DUCT UP & DOWN
→	EXHAUST TERMINAL
—E—	EXHAUST
===	A-CLASS DUCT
┌	BALANCING DAMPER
FD┌	FIRE DAMPER
#	FAN NUMBER
⊠	CENTRIFUGAL FAN
⊠	MOTOR OPERATED WATER TIGHT CLOSURE
⊠	VENTILATION WEATHER LOUVER

**SHEET INDEX**

SHEET NO.	DESCRIPTION
1.	GENERAL NOTES, REFERENCES, & SYMBOL LIST
2.	PARTIAL PLAN 13-B, 1ST PLATFORM SPACES WITH HVAC CHANGES PARTIAL PLAN 10-B, 2ND PLATFORM SPACES WITH HVAC CHANGES
3.	PARTIAL PLAN 22-B, MAIN DECK HVAC EXHAUST DUCTING CHANGES PARTIAL PLAN 18-B, 01 DECK HVAC EXHAUST DUCTING CHANGES



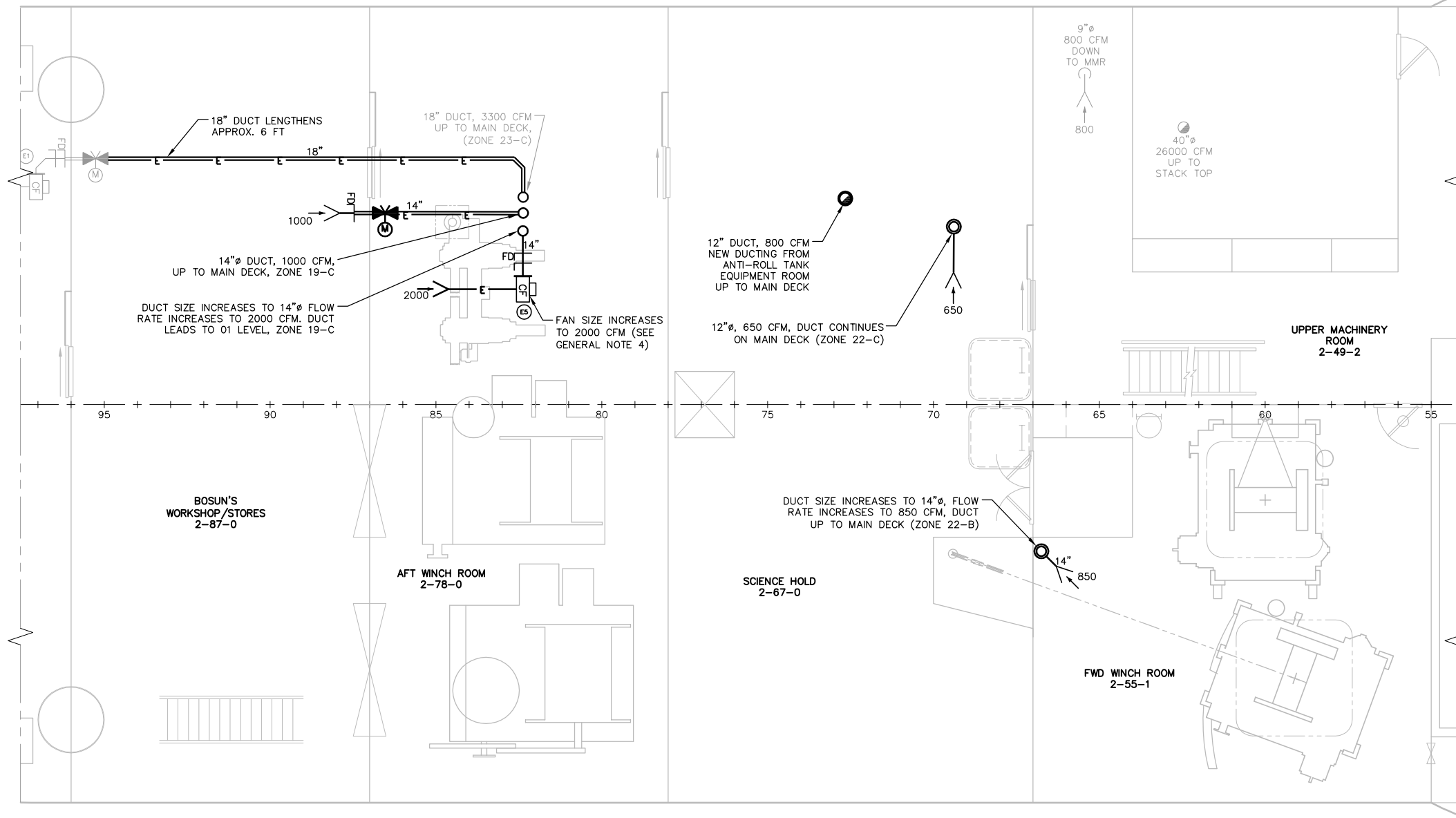
**UNIVERSITY OF ALASKA FAIRBANKS**  
FAIRBANKS, ALASKA

**ALASKA REGION RESEARCH VESSEL**  
CHANGES TO SUPPORT LENGTHENING OPTION  
HVAC EXHAUST DIAGRAM

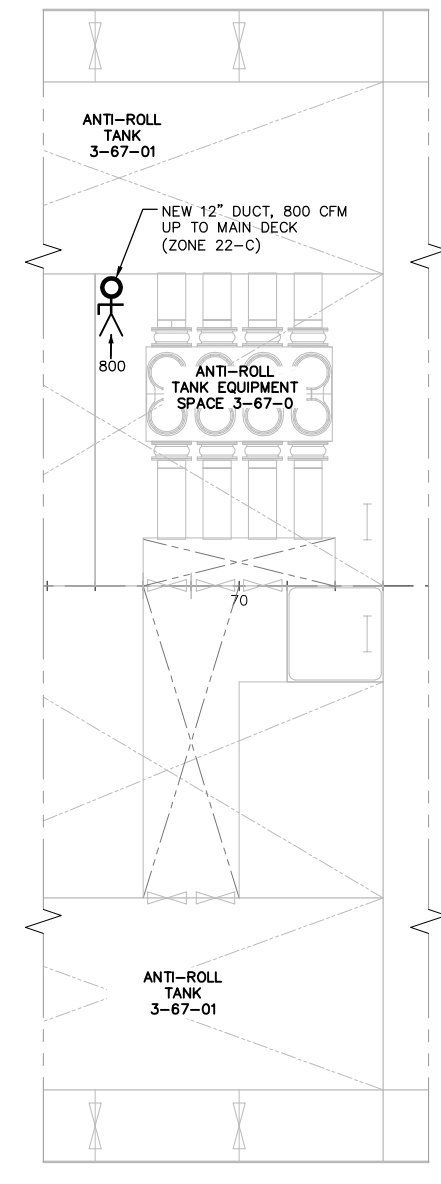
**THE GLOSTEN ASSOCIATES**  
Consulting Engineers Serving the Marine Community

1201 Western Avenue, Suite 200  
Seattle, Washington 98101-2921  
TEL: 206.624.7850  
FAX: 206.682.9117  
WEB: www.glosten.com

Drawn by	Date	Checked by	Date	Approved by	Date
SPR/JDC	8/12/09	SAC	8/12/09	DHK	8/12/09
Scale	Drawing Number		Rev		
NO SCALE	07096-511-02A		Sheet 1 of 3		



**PARTIAL PLAN 13-B**  
1ST PLATFORM



**PARTIAL PLAN 10-B**  
2ND PLATFORM

UNIVERSITY OF ALASKA FAIRBANKS  
FAIRBANKS, ALASKA

ALASKA REGION RESEARCH VESSEL  
CHANGES TO SUPPORT LENGTHENING OPTION  
HVAC EXHAUST DIAGRAM

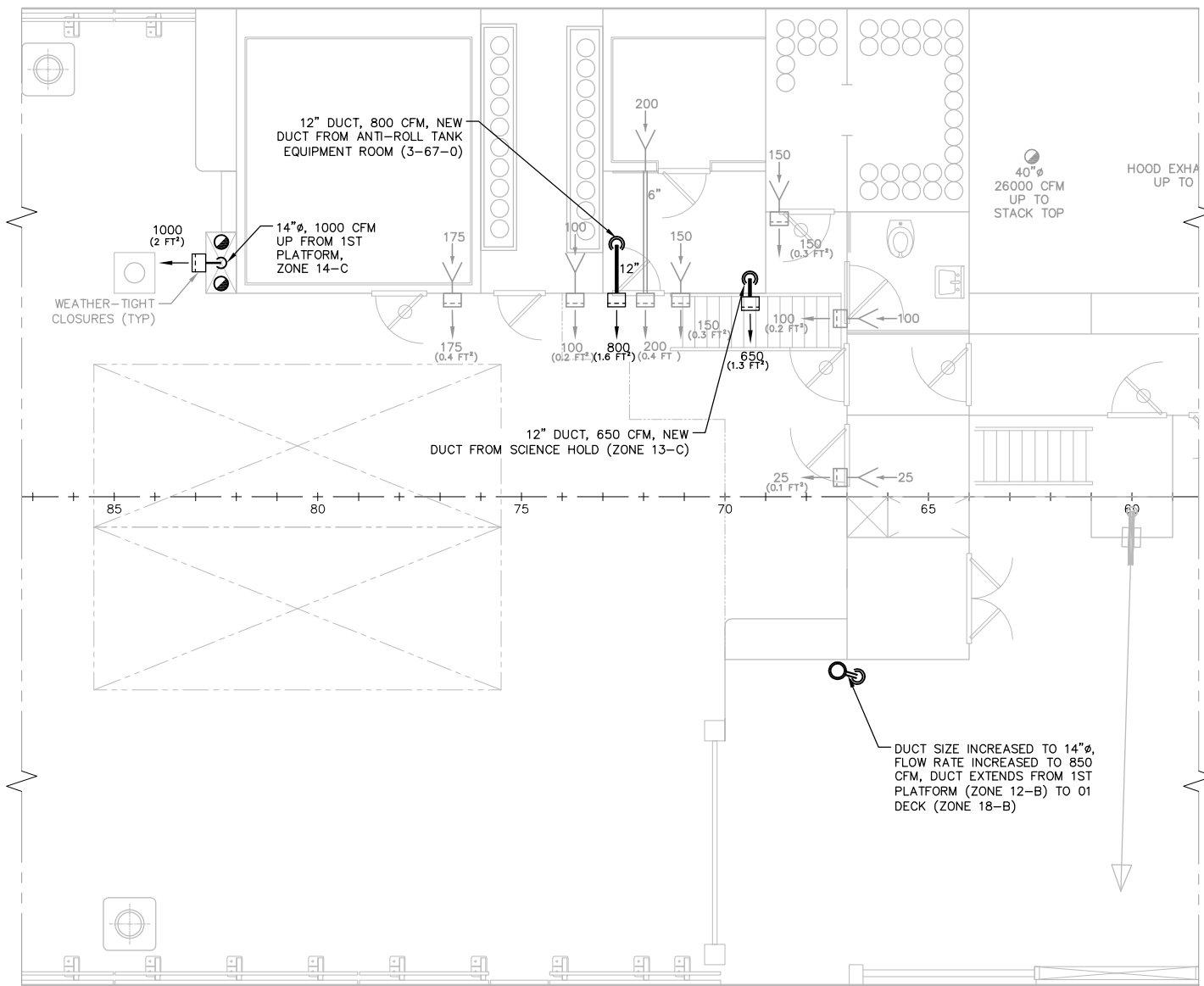
**THE GLOSTEN ASSOCIATES**  
Consulting Engineers Serving the Marine Community

1201 Western Avenue, Suite 200  
Seattle, Washington 98101-2921  
TEL: 206.624.7850  
FAX: 206.682.9117  
WEB: www.glosten.com

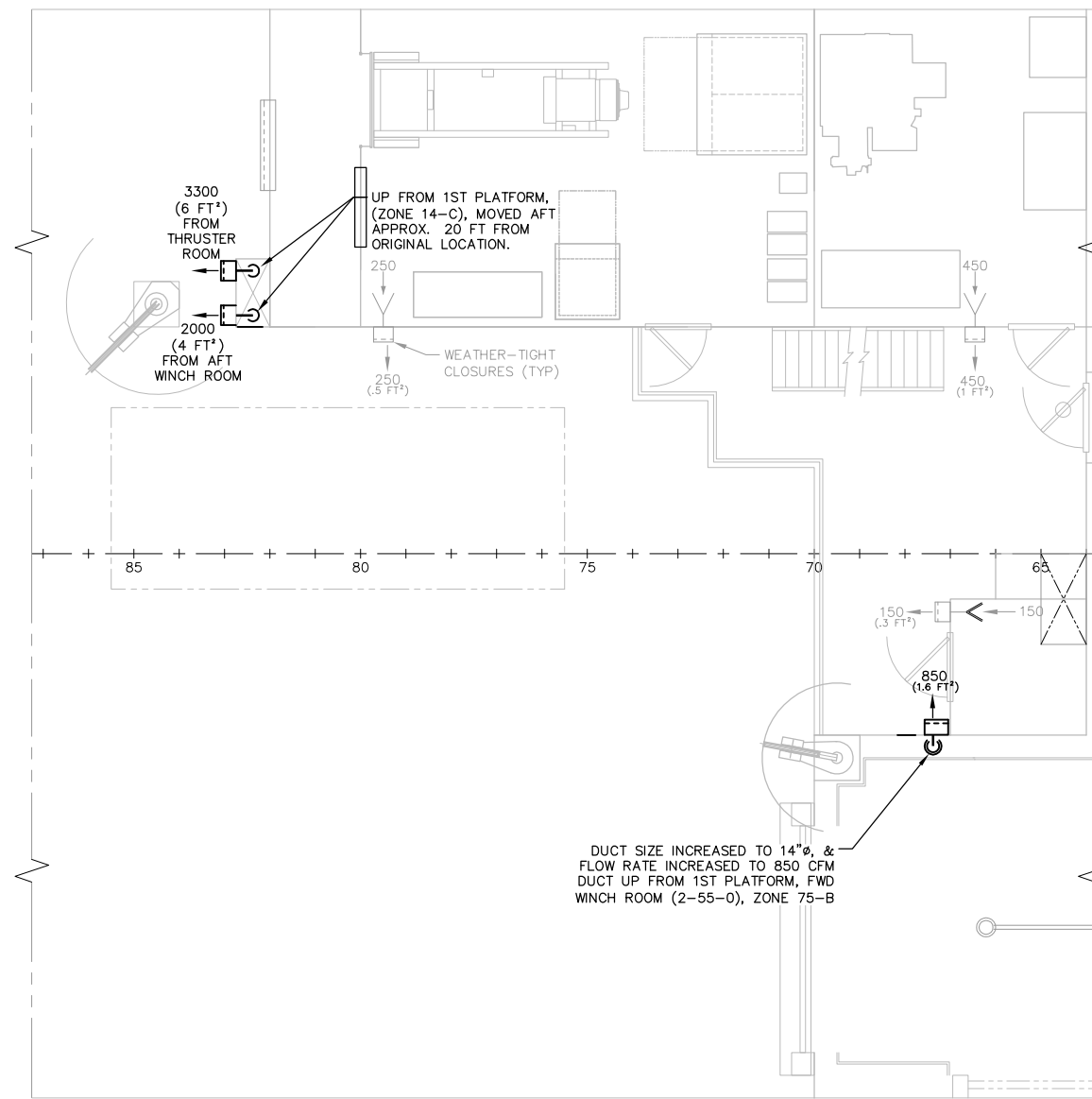
Drawn by	Date	Checked by	Date	Approved by	Date
SPR/JDC	8/12/09	SAC	8/12/09	DHK	8/12/09
Scale	Drawing Number		Rev		
NOT TO SCALE	07096-511-02A Sheet 2 of 3		-		

D

D



**PARTIAL PLAN 22-B**  
MAIN DECK



**PARTIAL PLAN 18-B**  
01 DECK

A

A

	<b>UNIVERSITY OF ALASKA FAIRBANKS</b> FAIRBANKS, ALASKA				
	<b>ALASKA REGION RESEARCH VESSEL</b> CHANGES TO SUPPORT LENGTHENING OPTION HVAC EXHAUST DIAGRAM				
		<small>1201 Western Avenue, Suite 200 Seattle, Washington 98101-2921 TEL: 206-624-7850 FAX: 206-682-9117 WEB: www.glosten.com</small>			
Drawn by	Date	Checked by	Date	Approved by	Date
SPR/JDC	8/12/09	SAC	8/12/09	DHK	8/12/09
Scale	Drawing Number		Rev		
NOT TO SCALE	07096-511-02A Sheet 3 of 3				