

SUPPLY FAN LIST						
FAN #	SERVICE	LOCATION	FAN			NOTES
			SUPPLY (CFM)	SP (IN WG)	MOTOR (HP)	
S5	AFT WINCH RM	IN SPACE (2-78-0)	2000	2.2	1.5	2 SPEED
S6	BOSUN'S, SCIENCE HOLD & ANTI- ROLL TANK	SCIENCE HOLD (2-67-0)	2450	2.4	2	2 SPEED
S7	FWD WINCH RM	IN SPACE (2-55-1)	850	3.3	0.75	

ELECTRIC UNIT HEATER LIST				
ELECTRIC UNIT HEATER #	SPACE	QTY.	CAPACITY (KW)	NOTES
13				NOT USED
14	BOSUNS WORKSHOP/STORES (2-87-0)	3	2.5	

HOT WATER COIL LIST				
COIL #	SPACE SERVED	LOCATION	HEATING (KW)	HOT WATER (GPM) (REF. 7)
PREHEATERS				
5	AFT WINCH RM	IN SPACE (2-78-0)	25.0	34.5
6	BOSUN'S, SCIENCE HOLD & ANTI- ROLL TANK	BOSUN'S WORKSHOP/STORES (2-87-0)	30.0	41.4
7	FWD WINCH RM	IN SPACE (2-55-1)	18.4	25.4

ALL CHANGES FROM THE UNLENGTHENED VERSION (REF 1) ARE SHOWN IN BOLD LINE WEIGHT

GENERAL NOTES

- THIS DRAWING SHOWS SYSTEM CHANGES NECESSARY TO SUPPORT THE 12 FOOT LENGTHENING OF THIS VESSEL. THIS DRAWING IS A SUPPLEMENT TO THE REFERENCE 1 SYSTEM DRAWING. SEE REFERENCE 1 FOR MATERIALS SCHEDULE, EQUIPMENT LISTS, GENERAL NOTES, AND DRAWING REFERENCES.
- SEVERAL OF THE SPACE LOCATIONS WERE PREVIOUSLY DESIGNATED BY DIFFERENT FRAME NUMBERS ON THE UN-LENGTHENED VESSEL. THE FOLLOWING SPACES SHOWN IN THE DRAWINGS WERE RE-NAMED TO REFLECT THE ARRANGEMENT CHANGES FOR THE VESSEL LENGTHENING.

DESCRIPTION	NEW	PREVIOUS DESIGNATION(S)
BOSN'S WORKSHOP/STORES	2-87-2	2-79-2 & 2-67-2
AFT WINCH ROOM	2-78-0	2-79-0
- TO ACCOMMODATE THE NEW ANTI-ROLL TANK'S EQUIPMENT, AN EQUIPMENT ROOM (3-67-0) HAS BEEN ADDED AFT OF THE MAIN MACHINERY ROOM. TO PROVIDE THE NECESSARY VENTILATION FOR THIS NEW SPACE, FAN S6 HAS BEEN UPSIZED. DETAILS ARE SHOWN ON SHEET 2.
- TO ACCOMMODATE THE LENGTHENED VESSEL DESIGN ADDITIONAL VENTILATION SHALL BE REQUIRED IN THE FOLLOWING SPACES:

BOSN'S WORKSHOP/STORES	2-87-2
AFT WINCH ROOM	2-78-0
SCIENCE HOLD	2-67-0
FWD WINCH ROOM	2-55-1

THREE OF THE FAN SIZES (S5, S6, & S7) HAVE CHANGED TO PROVIDE ADDITIONAL VENTILATION FOR THE ENLARGED SPACES (SEE SUPPLY FAN LIST). THE HOT WATER PREHEATER COILS SERVING THE SPACES HAVE ALSO INCREASED IN SIZE (SEE HOT WATER COIL LIST). CHANGES TO THE ELECTRIC UNIT HEATERS ARE SHOWN IN THE ELECTRIC UNIT HEATER LIST.

REFERENCES

- GLOSTEN DRAWING 07096-511-01, REV A, HVAC SUPPLY DIAGRAM
- GLOSTEN DRAWING 07096-070-01AC GENERAL ARRANGEMENT - CHANGES TO SUPPORT LENGTHENING OPTION

REVISIONS				
ZONE	REV	DESCRIPTION	DATE	APPROVED

SYMBOL LIST		SHEET INDEX	
SYMBOL	DESCRIPTION	SHEET NO.	DESCRIPTION
—	SUPPLY DUCT	1.	GENERAL NOTES, REFERENCES, REVISIONS, & SYMBOL LIST
—	A-CLASS DUCT	2.	PARTIAL PLAN 10-B, 1ST PLATFORM, FRAMES 54-97 PARTIAL PLAN 13-B, 2ND PLATFORM, FRAMES 66-74
○→	DUCT UP		
○←	DUCT DOWN		
⊙→	A-CLASS DUCT UP		
⊙	FAN NUMBER		
CF	CENTRIFUGAL FAN		
WF	HOT WATER PREHEATER		
EU	ELECTRIC UNIT HEATER		
↑	SUPPLY TERMINAL		
⊗	MOTOR OPERATED WATER TIGHT CLOSURE		
∟	BALANCING DAMPER		
FD	FIRE DAMPER		

SIGNED ORIGINAL ON FILE AT GLOSTEN

UNIVERSITY OF ALASKA FAIRBANKS
FAIRBANKS, ALASKA

ALASKA REGION RESEARCH VESSEL
CHANGES TO SUPPORT LENGTHENING OPTION
HVAC SUPPLY DIAGRAM

THE GLOSTEN ASSOCIATES Consulting Engineers Serving the Marine Community		1201 Western Avenue, Suite 200 Seattle, Washington 98101-2921 TEL: 206-624-7850 FAX: 206-682-9117 WEB: www.glosten.com	
Drawn by	Date	Checked by	Date
SPR/JDC	8/12/09	SAC	8/12/09
Scale	Drawing Number	Approved by	Date
NO SCALE	07096-511-01A	DHK	8/12/09

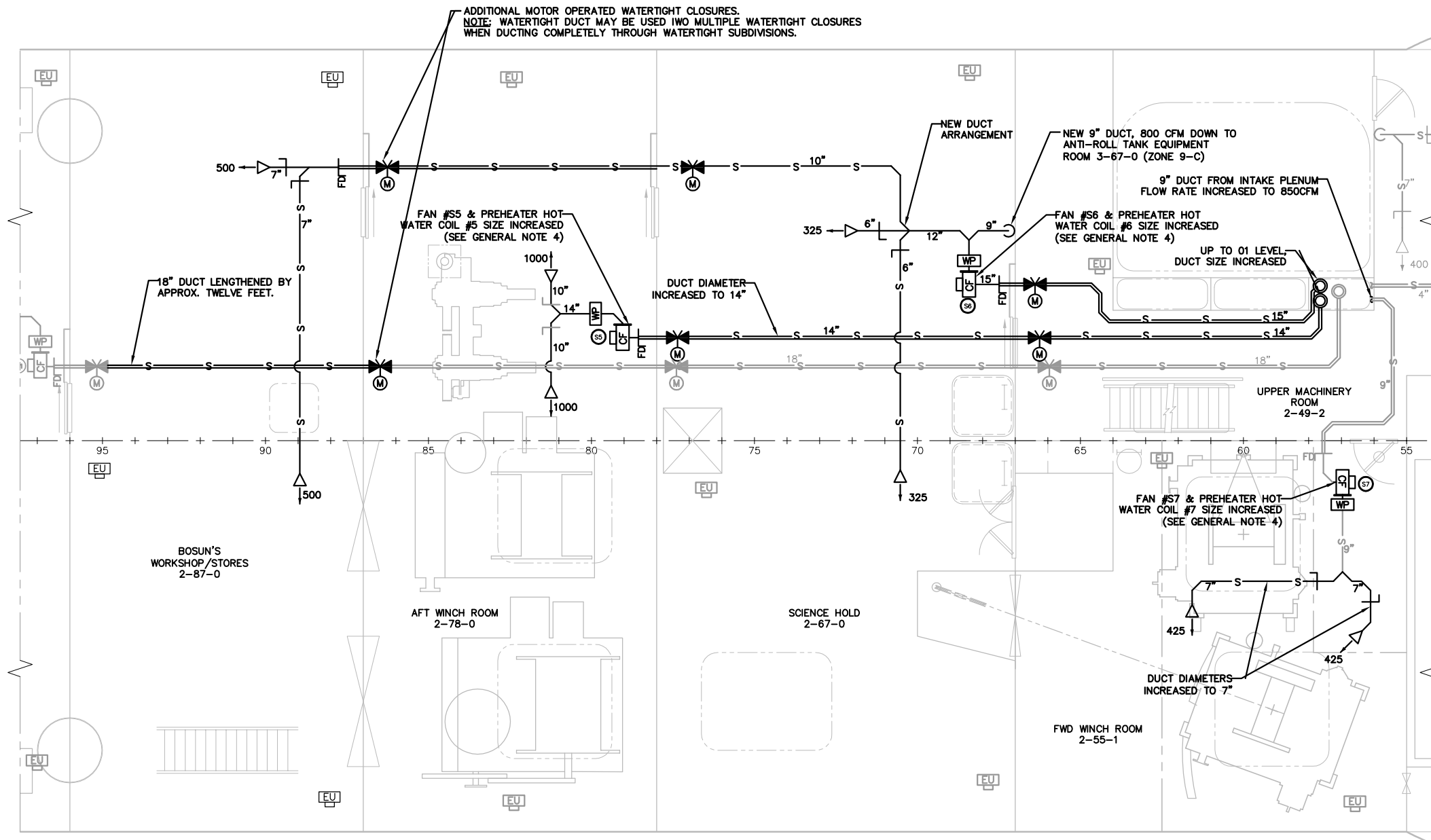
Sheet 1 of 2

D

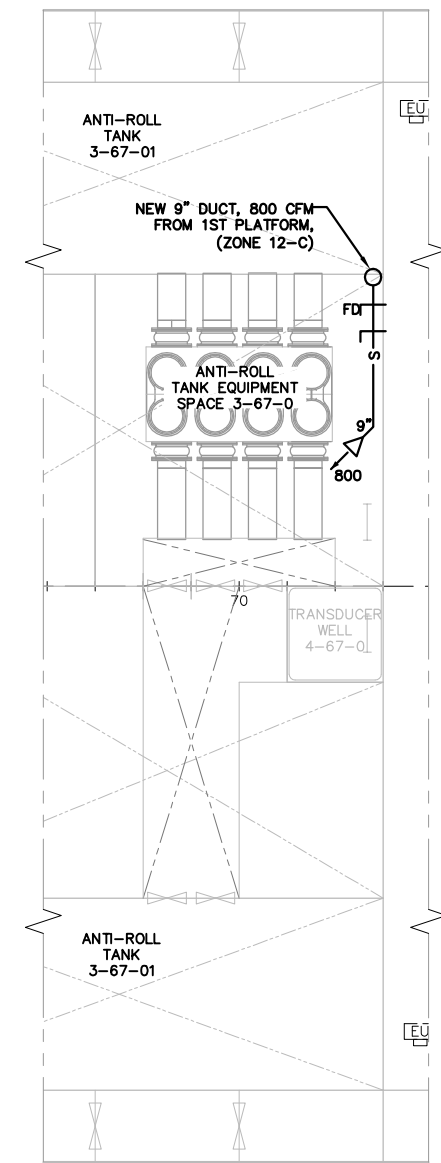
C

B

A



PARTIAL PLAN 13-B
 1ST PLATFORM VENTILATION
 (SEE GENERAL NOTE 4)



PARTIAL PLAN 10-B
 2ND PLATFORM VENTILATION
 (SEE GENERAL NOTES 3)



UNIVERSITY OF ALASKA FAIRBANKS FAIRBANKS, ALASKA			
ALASKA REGION RESEARCH VESSEL CHANGES TO SUPPORT LENGTHENING OPTION HVAC SUPPLY DIAGRAM			
THE GLOSTEN ASSOCIATES <small>Consulting Engineers Serving the Marine Community</small>		<small>1201 Western Avenue, Suite 200 Seattle, Washington 98101-2921 TEL: 206.624.7850 FAX: 206.682.9117 WEB: www.glosten.com</small>	
Drawn by	Date	Checked by	Date
SPR/JDC	8/12/09	SAC	8/12/09
Scale	Drawing Number		Approved by
NOT TO SCALE	07096-511-01A		DHK
			Date
			8/12/09
Sheet 2 of 2			Rev
			-