

GENERAL NOTES

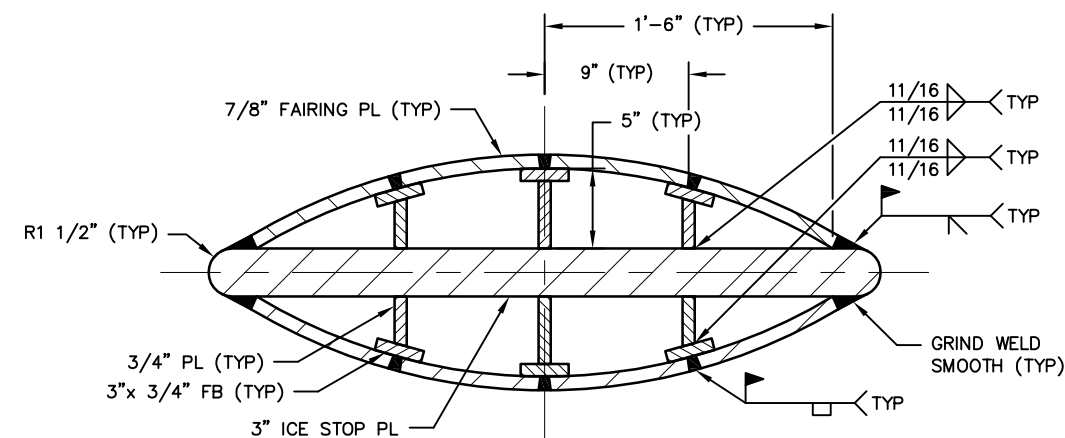
- TWO ICE STOPS ARE REQUIRED, 12'-0" OFF CENTERLINE P/S. THIS DRAWING SHOWS DETAILS AND MATERIALS FOR ONE ICE STOP ONLY.

REFERENCES

- GLOSTEN DWG NO 07096-100-02, REV B, STRUCTURE 01 LEVEL & BELOW
- GLOSTEN DWG NO 07096-100-04, REV B, STRUCTURAL FOUNDATIONS

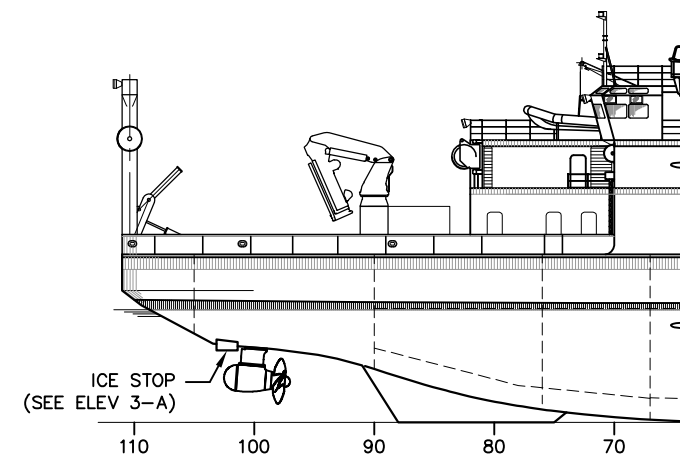
REVISIONS

ZONE	REV	DESCRIPTION	DATE	APPD
1-C	A	1. UPDATED REFERENCES TO LIST THE MOST CURRENT REVISION OF EACH DRAWING.	8/12/09	JAS



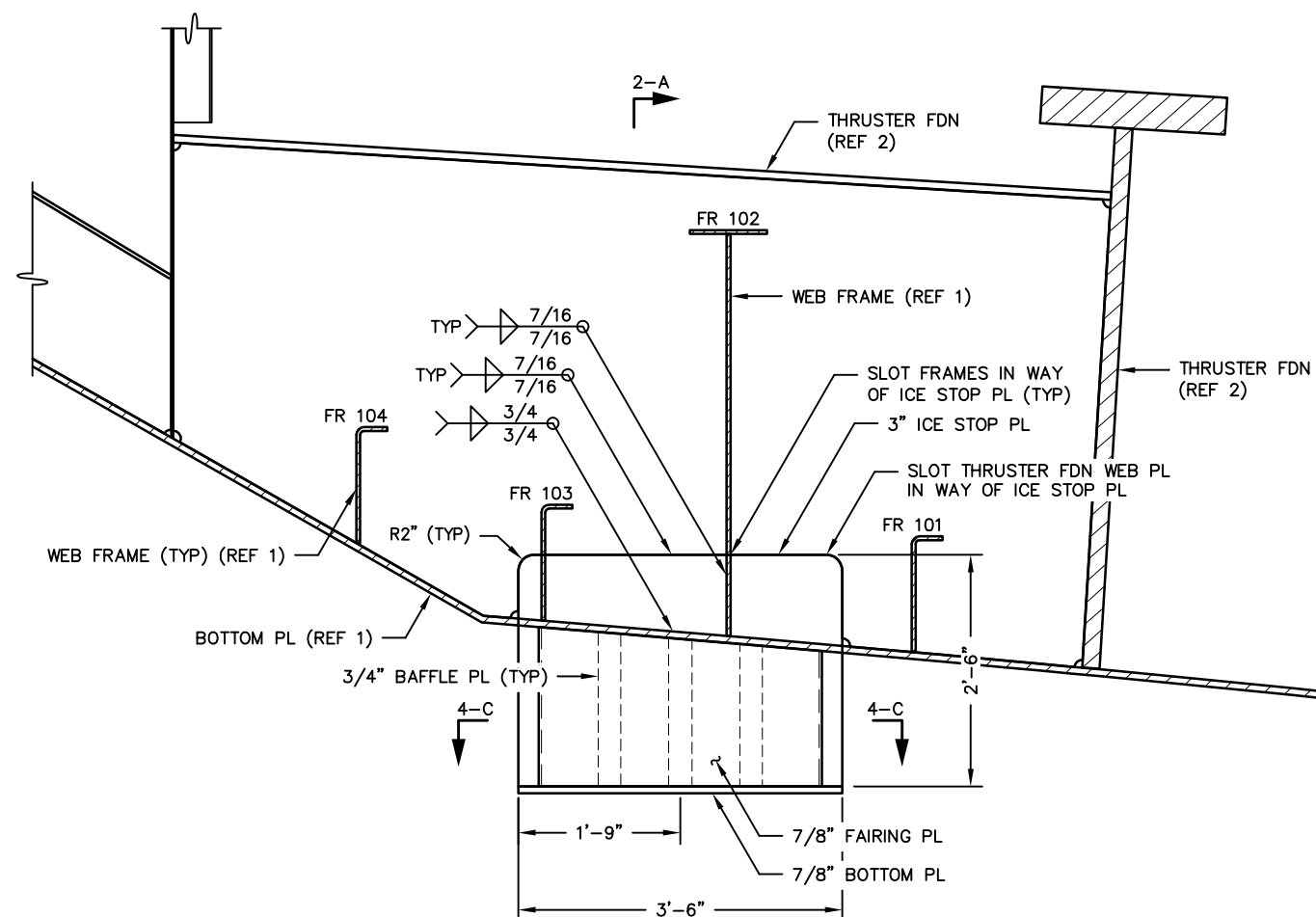
PLAN 4-C

1"=1'-0"



KEY PLAN

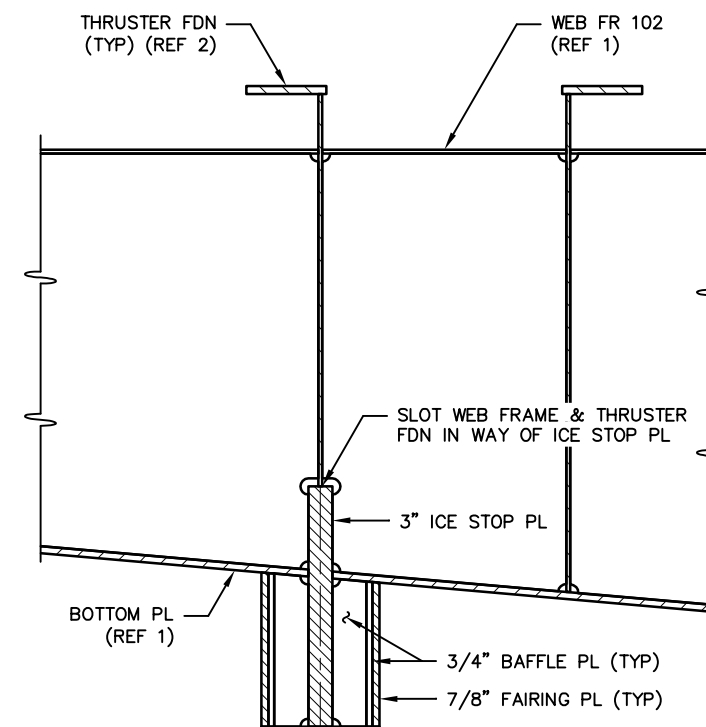
NO SCALE



ELEVATION 3-A

ICE STOP DETAIL

1/2"=1'-0"



SECTION 2-A

ICE STOP DETAIL

1/2"=1'-0"



UNIVERSITY OF ALASKA FAIRBANKS  
FAIRBANKS, ALASKA

ALASKA REGION RESEARCH VESSEL  
ICE STOP DETAIL

**THE GLOSTEN ASSOCIATES**  
Consulting Engineers Serving the Marine Community

1201 Western Avenue, Suite 200  
Seattle, Washington 98101-2921  
TEL 206.624.7850  
FAX 206.682.9117  
WEB www.glosten.com

Drawn by CWK	Date 8/12/09	Checked by JAS	Date 8/12/09	Approved by JAS	Date 8/12/09
-----------------	-----------------	-------------------	-----------------	--------------------	-----------------

Scale AS NOTED Drawing Number 07096-114-01 Sheet 1 of 1